

# The Role of Women

## Dr. Chung Sik Yong, July 31, 2022

### Key Points

1. True Mother was determined to take responsibility over the things True Father was unable to fulfill
2. We must all have a sense of ownership and do something out of our own initiative rather than doing so under orders.
3. I need to really have the taste of the Kingdom of Heaven within my family, within my community, within my church.
4. The minimum Kingdom of Heaven is three spiritual children who gather together and have heartistic give-and-take.
5. Wherever I go, I need to create the Kingdom of Heaven.
6. God wants to establish the Kingdom of Heaven on Earth first.
7. Treat your body as God's temple.
8. This is the age of receiving direct dominion from True Parents. We must first have spiritual experiences of True Father appearing in our dreams often and receive his directions.
9. The more years of experience you have in your faith being renewed, the more those spiritual experiences will gradually become stronger.
10. The heart that loves and longs for True Parents must be stronger than that of anyone else, and we must have the resolve to offer our life for the sake of God's will.
11. Once you have a deep longing heart, you can go anywhere, you can reach anyone.
12. We must have faith like sunflowers.
13. Human beings cannot live for a moment without God's love.
14. The path of faith is the path of life and death. Whatever the circumstances, faith must triumph. A life of faith is overcoming.♦

Now I have so much energy because I spent time with my family members. Whenever I see my grandchildren, I can get incredible energy and power. I really appreciate our Heavenly Parent and True Parents. Thank you so much for your incredible prayer and support for my family.

Today I'd like to talk about "The Role of Women" from *True Mother's Anthology, Book 1*.

*We need to advance not only toward the establishment of Cheon Il Guk, but also toward its firm settlement. The Chinese character "An" in anchak (firm settlement) is composed of the character of a woman ( ) within the character of a house or the top part of a Korean traditional hat for men. Hence, the character "an" is one that means comfort, peacefulness or calm. In the world, when a large house is built, who is the owner of the house? Is it the man or the woman? In Korea, we call the husband bakat-yangban (literally, the outside nobleman) and we call the wife anbang-manim (literally, the woman of the main room). In a traditional Korean house, which is divide into a number of sections, the husband is only in charge of the men's quarters, which is one of the outer sections of the house. What this means is that in the context of providential history, the woman's role is important. (2015.12.06, Cheon Jeong*

*Gung)*

*You must take the initiative on the front line in embracing all humanity in true love. While I was preparing for the Holy Wedding with True Father, I made the determination to end this tiresome providence of restoration through indemnity. However, it doesn't work with only a man. I also had to go with him all the way to the end. I had to fulfill my responsibility. You clearly understand indemnity conditions through the Divine Principle. I had to set up all the indemnity conditions by myself. That is the difference between you and me. I also had many critical moments. However, I was single-hearted in my devotion to liberate God. That is why I am confident in front of humanity as the True Parents. You, in particular, must become one with me. We must become one. In a world of goodness without any trace of the Fall, everyone would always know what God was thinking. Even if I don't say anything, you should be able to think, What is True Mother thinking of? I'll do this for her in that way. Wouldn't it be better for you to do something out of your own initiative than doing so under orders? (2013.12.02, Cheon Jeong Gung)*

True Mother said that the reason she made the determination to hold the Holy Wedding with True Father was to end the tiresome providence of restoration through indemnity of God's 6,000 year history within her lifetime. She also said that since True Father cannot do it alone, True Mother was determined to take responsibility over the things he was unable to fulfill and do it for him.

True Mother overcame unimaginable hurdles of indemnity and had many critical moments. But True Mother said that one thing that would not change was the single-hearted devotion to liberate God.

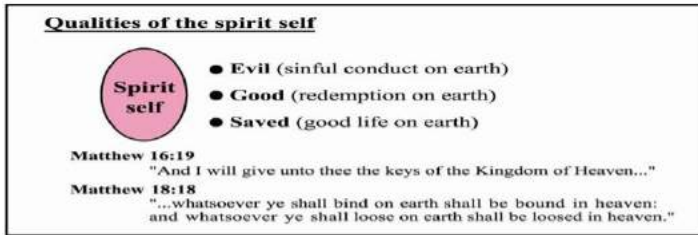
Therefore, she said that the only way for God's will to be realized is for us who follow True Mother to become one with her, and we must all have the sense of ownership and do something out of our own initiative rather than doing so under orders.

### **LIVING DIVINE PRINCIPLE: The Principle of Creation 60 - The Development, Perfection, and Features of the Spirit Self**

• *All the qualities of the spirit self are developed while it abides in the physical self: Sinful conduct during earthly life aggravates evil and ugliness in the spirit of a fallen person, while the redemption of sins granted during earthly life opens the way for his spirit to become*

good.

• *This was the reason Jesus had to come to the earth in the flesh to save sinful humanity, We must lead a good life while we are on the earth.*



• *In Matthew 16:19, Jesus gave the keys to the Kingdom of Heaven to Peter, who remained on the earth, and in Matthew 18:18, he said, "Whatever you bind on earth shall be bound in heaven, and whatever you loose on earth shall be loosed in heaven," because the primary objective of the providence of restoration must be carried out on earth.*

Whenever I read this Bible content, Matt. 18:18 – "Whatever you bind on earth shall be bound in heaven, and whatever you loose on earth shall be loosed in heaven" – if I do not taste the Kingdom of Heaven on Earth, it does not make sense to go to the spiritual world to have a taste of the Kingdom of Heaven. That's why no matter what I need to really have the taste of the Kingdom of Heaven within my family, within my community, within my church.

When Jesus passed away and gave the key to enter the Kingdom of Heaven to his main disciple, Peter, (it was) because we need to establish the Kingdom of Heaven not in heaven but centering on earth. That's why without establishing the Kingdom of Heaven, without tasting the Kingdom of Heaven in our family, in our community and in our church, it makes no sense. Let's have the taste of the Kingdom of Heaven on Earth.

Jesus said if you gather together 2 or 3 people in my name, then you can have an inseparable relationship, longing for each other, loving each other. That is already starting the Kingdom of Heaven. That is why the trinity is important. There is no need to talk about how terrible the secular world, how this and that are really problems. There is no need to mention that. (The issue is) how I can create the Kingdom of Heaven centering on me. At least I need to have give-and-take with a few people heartistically, internally; then they can feel that this is the Kingdom of Heaven. (?I want to start with?) this group, this trinity. This is the beginning of the Kingdom of Heaven.

How can we create the minimum Kingdom of

Heaven? At least three spiritual children, at least 2 or 3 people gather together and have heartistic give-and-take. This is the beginning of the Kingdom of Heaven. Without even the minimum Kingdom of Heaven centered on 2 or 3 spiritual children, it does not make any sense.

Our job is what? Wherever I go, I need to create that kind of beautiful Kingdom of Heaven environment. It does not matter (whether it is at) your place; (it can be) anywhere. How can I create that kind of Kingdom of Heaven anywhere? At least 2 or 3 people (who) always long for me and I long for them. When I come back home, my family is waiting for me. I really love them and take care of them. When I go to the Clifton Church, there are many object partners to have give-and-take with heartistically. I feel that the Kingdom of Heaven is here. If I go to Korea, there are many people with whom to have give-and-take heartistically. We are the ones who create the Kingdom of Heaven wherever we go, wherever I stay. This bible verse is very powerful.

If we can create the Kingdom of Heaven in Heaven, then it does not make any sense to live on the earth. The problem is that God wants to establish the Kingdom of Heaven on Earth first, then ultimately we can build the Kingdom of Heaven in heaven. This is really powerful.

Therefore while we are wearing our physical bodies, it is very important how we bear fruit in our physical body. How do we grow our spiritual self? Without our physical bodies it is impossible to grow our spiritual self, to cultivate our heart and mind. Our physical body is really important. How much incredible value it has!

That is why you need to treat your body as God's temple. How precious and important it is. Do not die easily. Do not get sick. While you are on earth, no matter what, you need to complete your spiritual self, you need to cultivate your heart, you need to experience the Four Great Realms of Heart and the Three Great Kingdoms. You need to have a real taste of the Kingdom of Heaven centering on your family, tribe, nation. This is very important.

Let's study Father's word.

### **This is the Era of Parents**

<91-184> *What kind of relationship do you have with me? You should see me during your prayer and in your dreams every day. Raise your hand if you have had such an experience. You must become these kinds of people. All Unification Church members throughout the world must have such experiences. You have to know about the spirit world. You must be able to see me in a vision even when wide awake. There will be someone*

who can do it. This is the first time in history for such phenomena to occur. It is unprecedented and will never happen again in the future. Because you wouldn't even know it if God appeared to you, I am appearing to you instead. Do you understand? We need to live in a realm of direct dominion such as this.

<91-174> So, do these spiritual experiences gradually become weaker or stronger? These experiences should gradually gain strength. Before Adam and Eve fell, they were not free from God's intervention. In the same way, I have to step into your individual lives and guide you in all matters. Do you understand what I am saying? [Yes.]

If you follow my directions and do everything with joy and excitement, you will enter that realm. Although I asked you to do the most difficult or impossible things, if you are determined to do them with more joy than I have, you will immediately enter that realm. If you step forward to accomplish them at the risk of your lives, I will immediately come to guide you.

Since we have passed the Old Testament Age and New Testament Age and are now living in the Era of Cheon Il Guk, we have ushered in an age of having to receive direct dominion from True Parents. We must first have spiritual experiences of True Father appearing in our dreams often and receive his directions.

True Father said that 100% of Unification Church members have to become people who receive direct dominion from True Parents. Then, he said the more years of experience you have in your faith being renewed, the more those spiritual experiences will gradually become stronger.

And just as Adam and Eve were intervened (with) by God when they were not fallen, True Father directly intervenes in our lives and tells us that everything should be a life that he can come and guide.

What should we do to receive the guidance of direct dominion that True Father talks about? There is only one way. The heart that loves and longs for True Parents must be stronger than anyone else, and we must have the resolve to offer our life for the sake of God's will.

You (should) truly have a longing heart as if you were crazy. How much do you long for True Father? You cannot even sleep, you cannot eat, you cannot do anything because you miss him, you long for him, (you are) really crazy. Beyond eating and sleeping and resting and day and night thinking about and longing for him, then True Father can directly intervene and guide you, he said.

The problem is that we do not have that kind of

longing heart, that kind of desperation. That is why even though True Father in the spiritual world tries to help (us), you don't have the foundation of a desperate longing heart. That is why God, True Father and the spiritual world cannot do anything.

There is a certain degree of longing heart. If your longing heart is shallow without desperation, then the spiritual world and True Father cannot create a reciprocal base. The important thing (is) the degree of longing heart, the degree of missing. What degree of heart and love do we have? This is the issue.

If there is no foundation to form a reciprocal relationship with True Parents, they cannot come down and directly work.

That is why the Kingdom of Heaven is what? The world of longing heart. Once you have a deep longing heart, you can go anywhere, you can reach anyone. This is really powerful. A longing heart is beyond denomination, beyond any boundary. That is the world of the longing heart.

### **TODAY'S YOUTH MINISTRY: A Person of Heart is Always Steadfast Like a Tree Go Out with the Center on the Foundation of Seniors' Sacrifice**

1. *All things exist in principle. Is there unprincipledness among them? Fallen nature cannot be discovered anywhere among all things. Look at trees. As the central column grows, the left and right branches stretch up. Branches that do not receive sunlight wither and die, and branches that grow, having a reciprocal relationship with sunlight while facing the center, live. Let's think of the column that faces the center as True Parents and the branches attached to the tree as our Unification Church members. There are bound to be sacrifices from our seniors along the way. However, we have to kick them and go out, facing the center. After stepping on the sacrifice of our seniors, we must have the heart to go through with the center. That is, we have to tread on death and overcome it. This tree shows that they stood up after stepping on such sacrifice and death.*

All things always follow the law of nature and exist in (the) principle. All things live absolutely conforming to the principle of nature. All things know how to genuinely preserve themselves and grow themselves without any gaps at any given moment. Therefore, human beings must also live and absolutely conform centering on the law of God's Word.

And just as tree branches stretch up centering on the central column, our faith also cannot deviate from the center.

In addition, it is a principle that you should go out with an absolute mutual relation with the center. How much are you aligned with God and True Parents?

We must have faith like sunflowers' faith. True Mother often talks about faith like that of sunflowers. Sunflowers rotate their bodies centering on the sunlight all the time. Do you have that kind of alignment with God and True Parents? This is beautiful. I think hebaragi – Koreans say hebaragi – is really guiding us. What is our life of faith? Our life of faith should be like sunflowers. It doesn't matter whether it is raining or not – or (despite) any situation, sunflowers know where the sun is and rotate their bodies centering on the sunlight all the time 24-hours (a day). This is really amazing. Sunflowers really teach us. We need to have sunflower faith.

Just as when a tree does not see sunlight, its branches wither and die, if we do not live while absorbing God's love like the sunlight, we will die. Just like how a tree cannot live for a moment without sunlight, human beings also cannot live for a moment without God's love.

As a tree grows, the first branch is pushed by the new branch and eventually disappears, so we must constantly advance toward the center on the foundation of our ancestors' sacrifice.

Some branches disappear. Our ancestors' sacrificial foundation is really incredible. They come and go, and come and go and disappear. Because of their incredible foundation and sacrifice, we are still here.

After stepping on the sacrifice of our seniors, we must have the heart to go through with the center. That is, we have to tread on death and overcome it.

### **If You Cannot Have the Essence of Love, You Fall behind**

*2. How many people fall on the path we are walking on? How many people fall under the shadows, fall after being removed by others, fall because Cain and Abel have discord, and make mistakes in relationships and become like dead branches? There are many people who become like trees that do not see sunlight and die. Among us believers, there are people who wither and die. Even though you just have a physical body and are eating, if you cannot have the essence of love, it is always easy to fall behind. People who do not possess love have the appearance of a living person, but they are dead.*

How many people fall behind on the path we are walking on? There are a lot of members who return, but the number of members (who) leave is too large to

count. Our surrounding environment is more of an environment that puts me to the test and puts me down rather than an environment that welcomes me. Therefore, the environment always drives me into an environment where I have no choice but to betray God.

That is why we need to overcome any environment.

That is why True Father said faith is overcoming. Faith that cannot overcome the environment leads to death. No matter what happens, you have to overcome it. If you overcome the environment, it is life; if you do not overcome it, it is death. This is a problem.

If we overcome, we can go forward, we can see life, we can see hope and vision. But if you cannot overcome what happens, you will die.

It's like going into the sea and if you can swim, you can enjoy freedom and save lives, but if you don't know how to swim, you will eventually die.

What shall we do? It is like how if Adam and Eve ate the fruit of the Tree of the Knowledge of Good and Evil – God said not to eat (it) – they would surely die. If they did not eat the fruit, they would have eternal life and blessings. The path of faith is the path of life and death. There is a question of life or death at stake. Therefore, the life of faith should never be neglected.

Faith must be centered with the absolute central figure in any environment, and can only survive when a common base is created. Even though you just have a physical body and are eating, if you cannot have the essence of love, it is always easy to fall behind. People who do not possess love have the appearance of a living person, but they are dead.

This is really important. Whatever the circumstances, faith must triumph. You must gain victory no matter what. It is our destiny to win. If you do not overcome, you will die.

Therefore, there can be no failure or setbacks in the life of faith. If you do not have victory in your life of faith, you will be sacrificed to Satan. You become Satan's offering. In any circumstance, our absolute destiny is to win and to gain victory, no matter what. We need to overcome. We need to win. We need to win the victory. This is our absolute destiny. We cannot fail. If you fail, it means you connect to death. That is why no matter what we need to overcome. A life of faith is overcoming.

Because God is alive – God is a living God – if you unite with God, you can overcome anything. Nothing is impossible in the name of God, in the name of True Parents. We can overcome. Our choice is what? Not failure. No matter what, we need to overcome. This is

our absolute destiny. Do not allow any failure. Everybody needs to complete.

A life of faith is what? Life and death. To win we must be people of heart. We need to be heartistic people and connect to God's heart. A person of heart is always steadfast like a tree. Let's be that kind of tree. Actually all things teach us so many things.

I hope you understand what I am talking about just now. Thank you and God bless you. I already miss you, love you so much.

**LIVING TESTIMONY: I'm a Living  
Testimony for Whom Anything is Possible**

(Testimony of Ka-Yeon Moyongo, CARP and YCLC leader in Minnesota.)

I am happy to see Kodan members helping our CARP members. This is really beautiful. First generation and second generation get along and witness together. It is very powerful. I can only see this kind of environment in America, not in other nations.◆

*NOTE: This lightly edited transcription may contain errors and omissions. Indecipherable or uncertain words and guesses are tagged with a "(?)" and indecipherable phrases, with an ellipsis "...". First, second and third person pronouns have been left as spoken if the meaning is clear, and other apparently Korean English expressions have been preserved. Some repeated phrases have been eliminated. This text and the PowerPoint slides from this speech are available as PDF files at the top of this text. Audio only is available at [anchor.morndev.com](http://anchor.morndev.com), [spotify.morndev.com](https://open.spotify.com/playlist/morndev) & [audio.morndev.com](http://audio.morndev.com). Notes or transcripts of Dr. Yong's Morning Devotion speeches from November 11, 2020 through March 29, 2022 are available as six paperback books at cost at [Lulu.com/Shop](https://www.lulu.com/shop) -- search for Dr. Chung Sik Yong -- and as PDF downloads free of charge at [MDBooks.Hoondok.com](http://MDBooks.Hoondok.com).◆*

Episode 279

# Morning Heart Devotion

The 17<sup>th</sup> 40 day Jeongseong Condition (4<sup>th</sup> day)  
279 day (644)

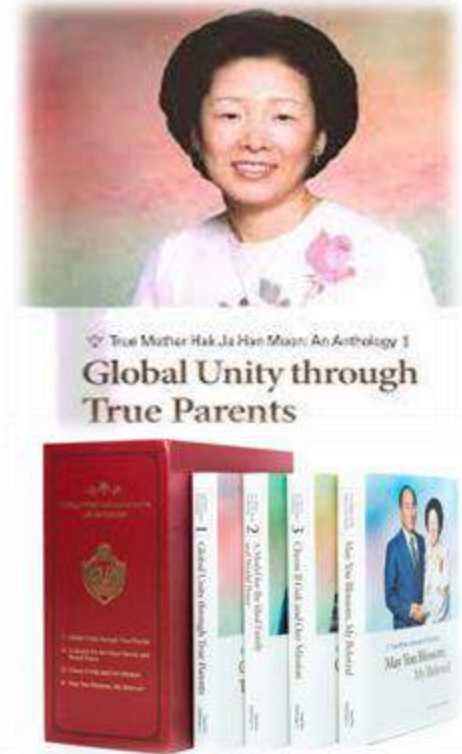
**The role of women**  
여성의 역할

July 31, 2022

North America HQ

# The role of women

We need to advance not only toward the establishment of Cheon Il Guk, but also toward its firm settlement. The Chinese character “An(安)” in anchak (firm settlement) is composed of the character of a woman (女) within the character of a house or the top part of a Korean traditional hat for men (宀). Hence, the character “an” is one that means comfort, peacefulness or calm. In the world, when a large house is built, who is the owner of the house? Is it the man or the woman? In Korea, we call the husband bakat-yangban (literally, the outside nobleman) and we call the wife anbang-manim (literally, the woman of the main room). In a traditional Korean house, which is divide into a number of sections, the husband is only in charge of the men's quarters, which is one of the outer sections of the house. What this means is that in the context of providential history, the woman’s role is important. (2015.12.06, Cheon Jeong Gung)



# The role of women

You must take the initiative on the front line in embracing all humanity in true love. While I was preparing for the Holy Wedding with True Father, I made the determination to end this tiresome providence of restoration through indemnity. However, it doesn't work with only a man. I also had to go with him all the way to the end. I had to fulfill my responsibility. You clearly understand indemnity conditions through the Divine Principle. I had to set up all the indemnity conditions by myself. That is the difference between you and me. I also had many critical moments. However, I was single-hearted in my devotion to liberate God. That is why I am confident in front of humanity as the True Parents. You, in particular, must become one with me. We must become one. In a world of goodness without any trace of the Fall, everyone would always know what God was thinking. Even if I don't say anything, you should be able to think, What is True Mother thinking of? I'll do this for her in that way. Wouldn't it be better for you to do something out of your own initiative than doing so under orders? (2013.12.02, Cheon Jeong Gung)





**Living Divine Principle**

# Principle of Creation 60

**The Development, Perfection, and  
Features of the Spirit Self**

## Qualities of the spirit self



- **Evil** (sinful conduct on earth)
- **Good** (redemption on earth)
- **Saved** (good life on earth)

### **Matthew 16:19**

"And I will give unto thee the keys of the Kingdom of Heaven..."

### **Matthew 18:18**

"...whatsoever ye shall bind on earth shall be bound in heaven:  
and whatsoever ye shall loose on earth shall be loosed in heaven."

- All the qualities of the spirit self are developed while it abides in the physical self: Sinful conduct during earthly life aggravates evil and ugliness in the spirit of a fallen person, while the redemption of sins granted during earthly life opens the way for his spirit to become good.
- This was the reason Jesus had to come to the earth in the flesh to save sinful humanity. We must lead a good life while we are on the earth.

## Qualities of the spirit self



- **Evil** (sinful conduct on earth)
- **Good** (redemption on earth)
- **Saved** (good life on earth)

### **Matthew 16:19**

"And I will give unto thee the keys of the Kingdom of Heaven..."

### **Matthew 18:18**

"...whatsoever ye shall bind on earth shall be bound in heaven:  
and whatsoever ye shall loose on earth shall be loosed in heaven."

- In Matthew 16:19, Jesus gave the keys to the Kingdom of Heaven to Peter, who remained on the earth, and in Matthew 18:18, he said, "whatever you bind on earth shall be bound in heaven, and whatever you loose on earth shall be loosed in heaven," because the primary objective of the providence of restoration must be carried out on earth.

# This is the Era of Parents



<91-184>What kind of relationship do you have with me? **You should see me during your prayer and in your dreams every day.** Raise your hand if you have had such an experience. You must become these kinds of people. All Unification Church members throughout the world must have such experiences. **You have to know about the spirit world. You must be able to see me in a vision even when wide awake.** There will be someone who can do it. This is the first time in history for such phenomena to occur. It is unprecedented and will never happen again in the future. Because you wouldn't even know it if God appeared to you, I am appearing to you instead. Do you understand? We need to live in a realm of direct dominion such as this.

# This is the Era of Parents

<91-174> So, do these spiritual experiences gradually become weaker or stronger? These experiences should gradually gain strength. Before Adam and Eve fell, they were not free from God's intervention. In the same way, I have to step into your individual lives and guide you in all matters. Do you understand what I am saying? [Yes.]

If you follow my directions and do everything with joy and excitement, you will enter that realm. Although I asked you to do the most difficult or impossible things, if you are determined to do them with more joy than I have, you will immediately enter that realm. If you step forward to accomplish them at the risk of your lives, I will immediately come to guide you.



# Today's Youth Ministry

**A Person of Heart is Always Steadfast Like a  
Tree**

심정의 사람은 나무와 같이  
언제나 한결같은 사람이다

**Go Out  
with the  
Center  
on the  
Foundation  
of Seniors'  
Sacrifice**

1. All things exist in principle. Is there unprincipledness among them? Fallen nature cannot be discovered anywhere among all things. Look at trees. As the central column grows, the left and right branches stretch up. Branches that do not receive sunlight wither and die, and branches that grow, having a reciprocal relationship with sunlight while facing the center, live. Let's think of the column that faces the center as True Parents and the branches attached to the tree as our Unification Church members. There are bound to be sacrifices from our seniors along the way. However, we have to kick them and go out, facing the center. After stepping on the sacrifice of our seniors, we must have the heart to go through with the center. That is, we have to tread on death and overcome it. This tree shows that they stood up after stepping on such sacrifice and death.



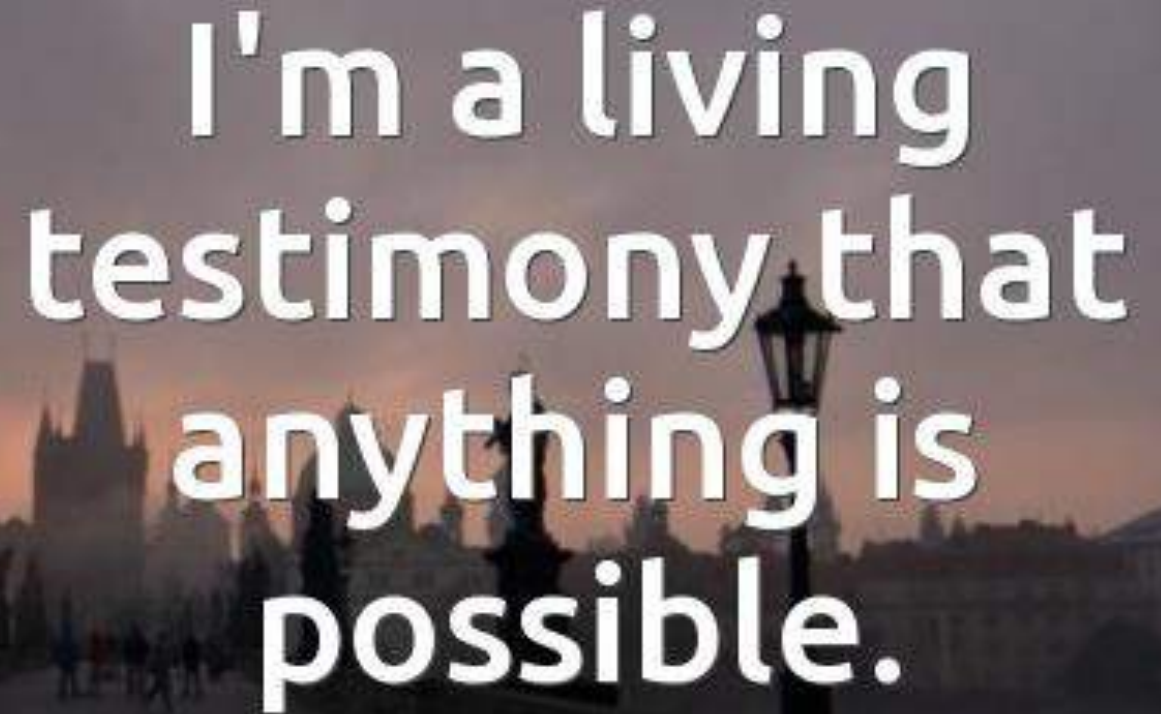
**If You  
Cannot  
Have the  
Essence of  
Love, You  
Fall behind**

2. How many people fall on the path we are walking on? How many people fall under the shadows, fall after being removed by others, fall because Cain and Abel have discord, and make mistakes in relationships and become like dead branches? There are many people who become like trees that do not see sunlight and die. Among us believers, there are people who wither and die. Even though you just have a physical body and are eating, if you cannot have the essence of love, it is always easy to fall behind. People who do not possess love have the appearance of a living person, but they are dead.

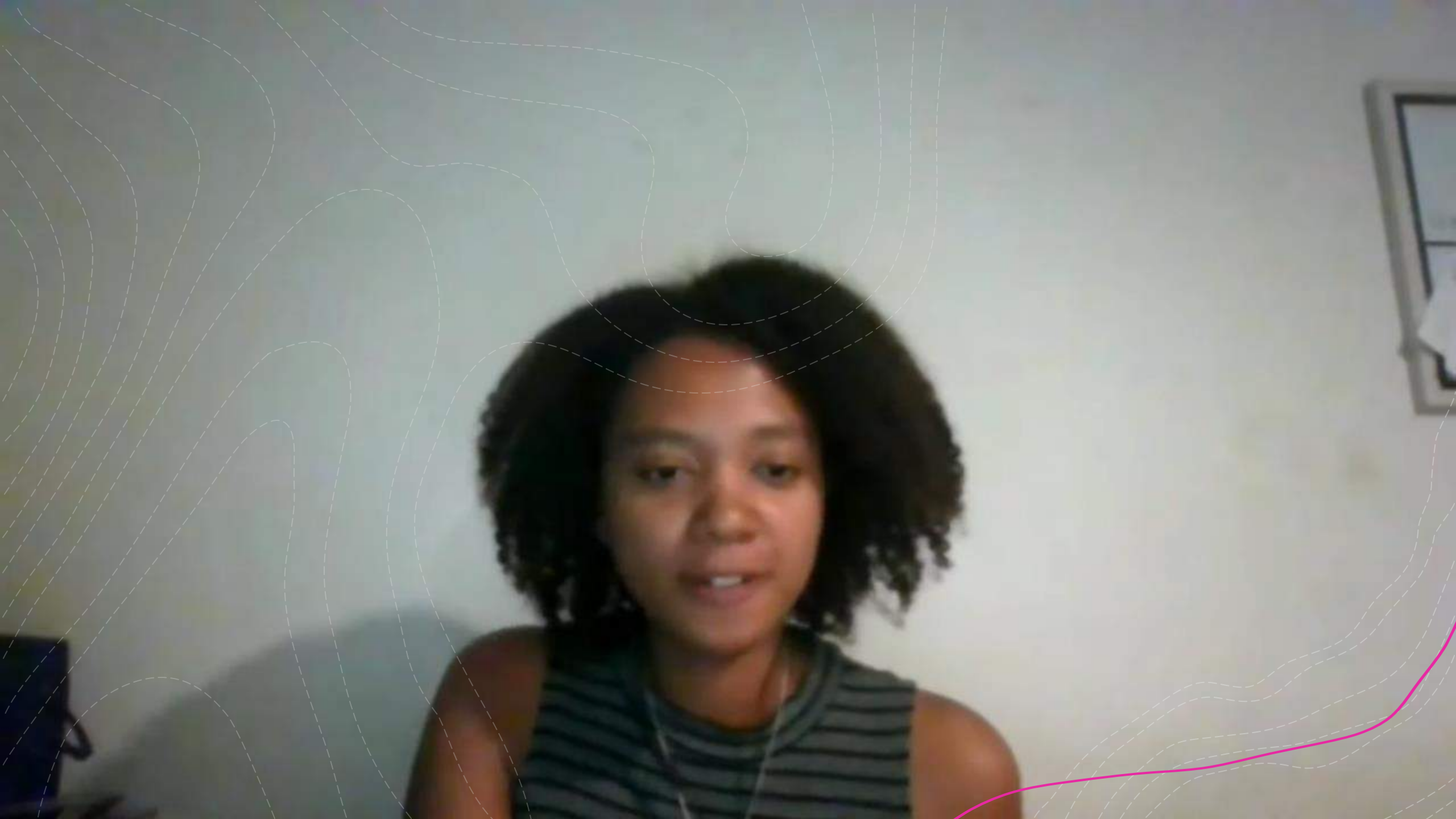
**If You  
Cannot  
Have the  
Essence of  
Love, You  
Fall behind**

2. How many people fall on the path we are walking on? How many people fall under the shadows, fall after being removed by others, fall because Cain and Abel have discord, and make mistakes in relationships and become like dead branches? There are many people who become like trees that do not see sunlight and die. Among us believers, there are people who wither and die. Even though you just have a physical body and are eating, if you cannot have the essence of love, it is always easy to fall behind. People who do not possess love have the appearance of a living person, but they are dead.

# Living Testimony

A photograph of a snowy street at dusk. In the background, a church spire is visible against a dark sky. A street lamp stands in the foreground on the right. The scene is dimly lit, with the warm glow of the setting or rising sun providing the main light source.

I'm a living  
testimony that  
anything is  
possible.





# Witnessing Experiences



Ka-Yeon (Kai) Moyongo

# Congratulations on the establishment of



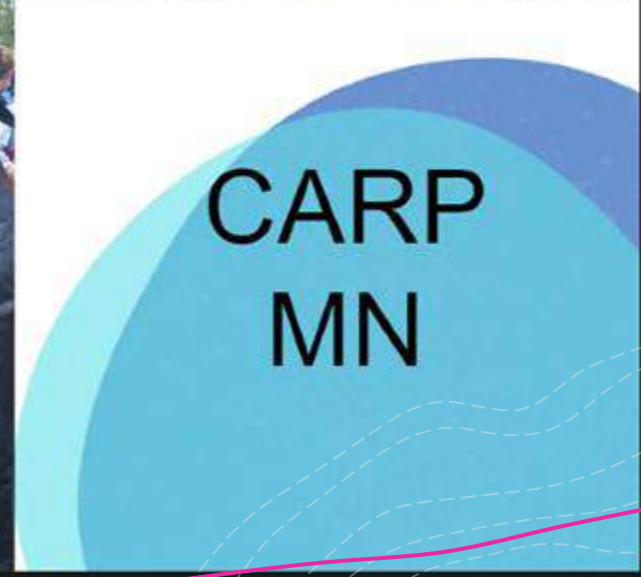
## CARP University of Minnesota, Twin Cities!





# CARP Minnesota







# CARP Midwest Workshop

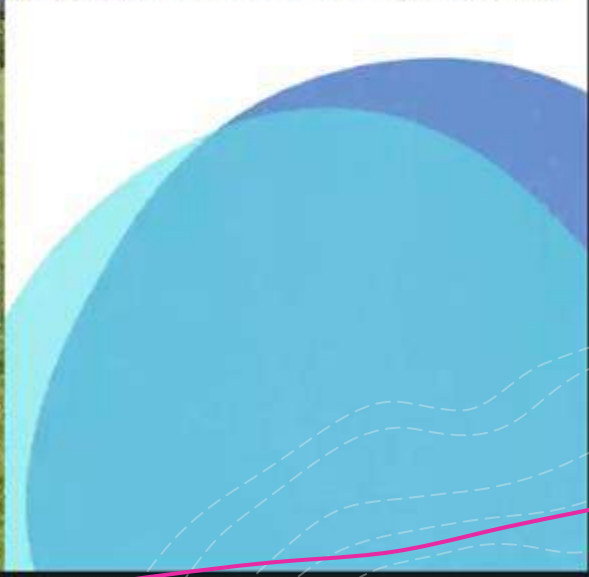


Ka-Yeon (Kai) Moyongo

# CARP Summer Empowerment Program

7/18-7/22











Thank You  
Heavenly Parent & True Parents!!!



하늘부모님과 참부모님께  
진심으로 감사드립니다~





**Thank you so much**